

THIS INSTRUMENT PREPARED BY
 DAVID P. LINDLEY
 OF
CAULFIELD and WHEELER, INC.
 SURVEYORS - ENGINEERS - PLANNERS
 7900 GLADES ROAD, SUITE 100
 BOCA RATON, FLORIDA 33434
 OFFICE (561)392-1991 FAX (561)750-1452
 CERTIFICATE OF AUTHORIZATION NO. LB 3591
 JULY - 2017

CRESTWOOD NORTH

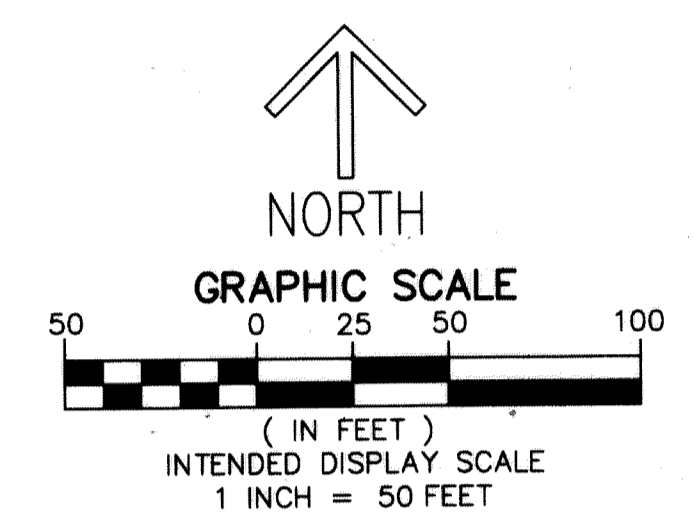
BEING REPLAT OF A PORTION OF TRACT B, PLAT OF SECTION 15, NORTHEAST QUARTER ACCORDING TO THE PLAT THEREOF, AS RECORDED IN PLAT BOOK 107, PAGES 173 AND 174 AND ALL OF TRACTS C AND D, PLAT OF SARATOGA AT ROYAL PALM PLAT I, ACCORDING TO THE PLAT THEREOF AS RECORDED IN PLAT BOOK 61, PAGES 66 THROUGH 74, ALL OF THE PUBLIC RECORDS OF PALM BEACH COUNTY, FLORIDA, LYING IN SECTION 15, TOWNSHIP 43 SOUTH, RANGE 41 EAST, VILLAGE OF ROYAL PALM BEACH, PALM BEACH COUNTY, FLORIDA

99

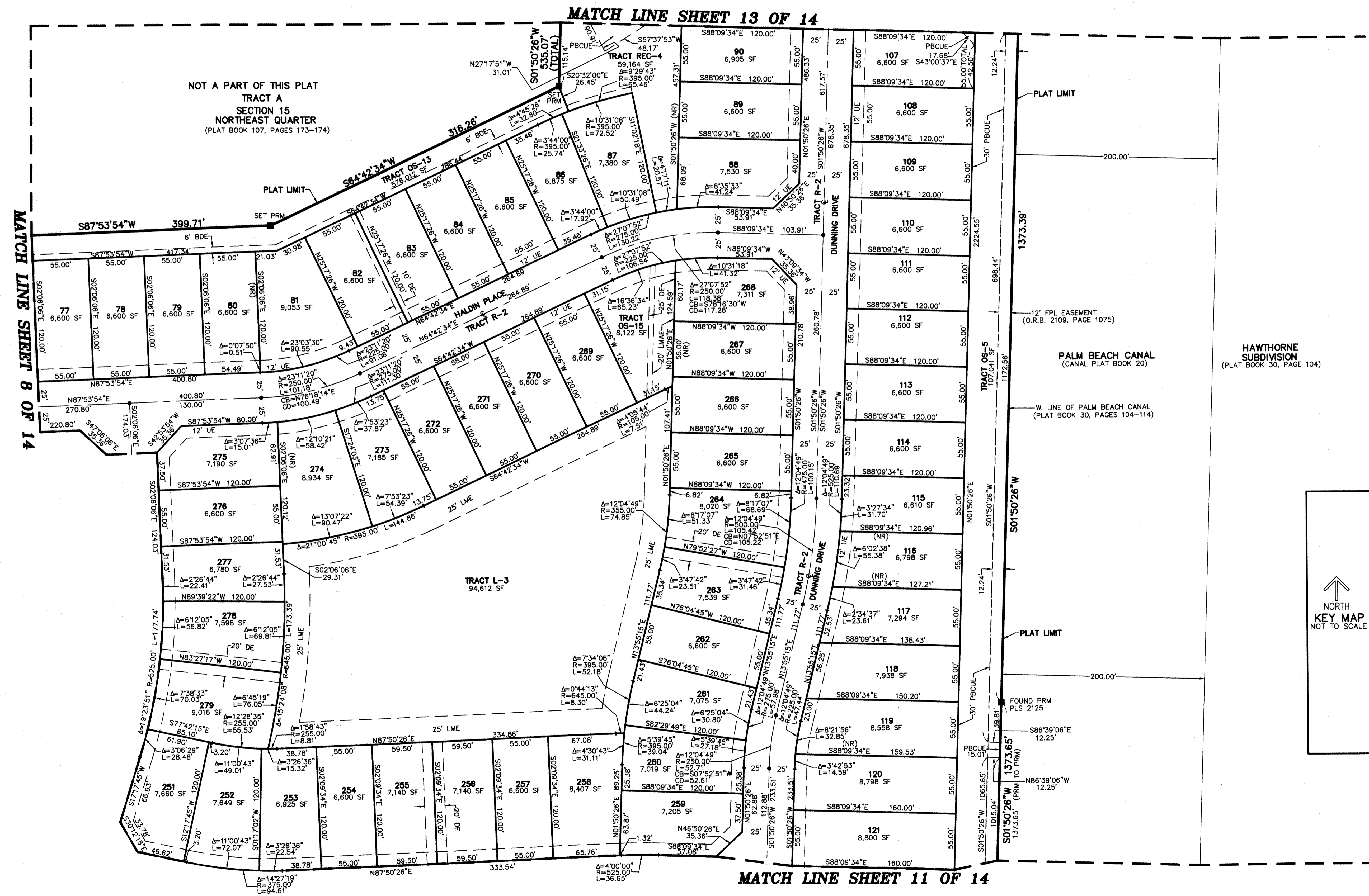
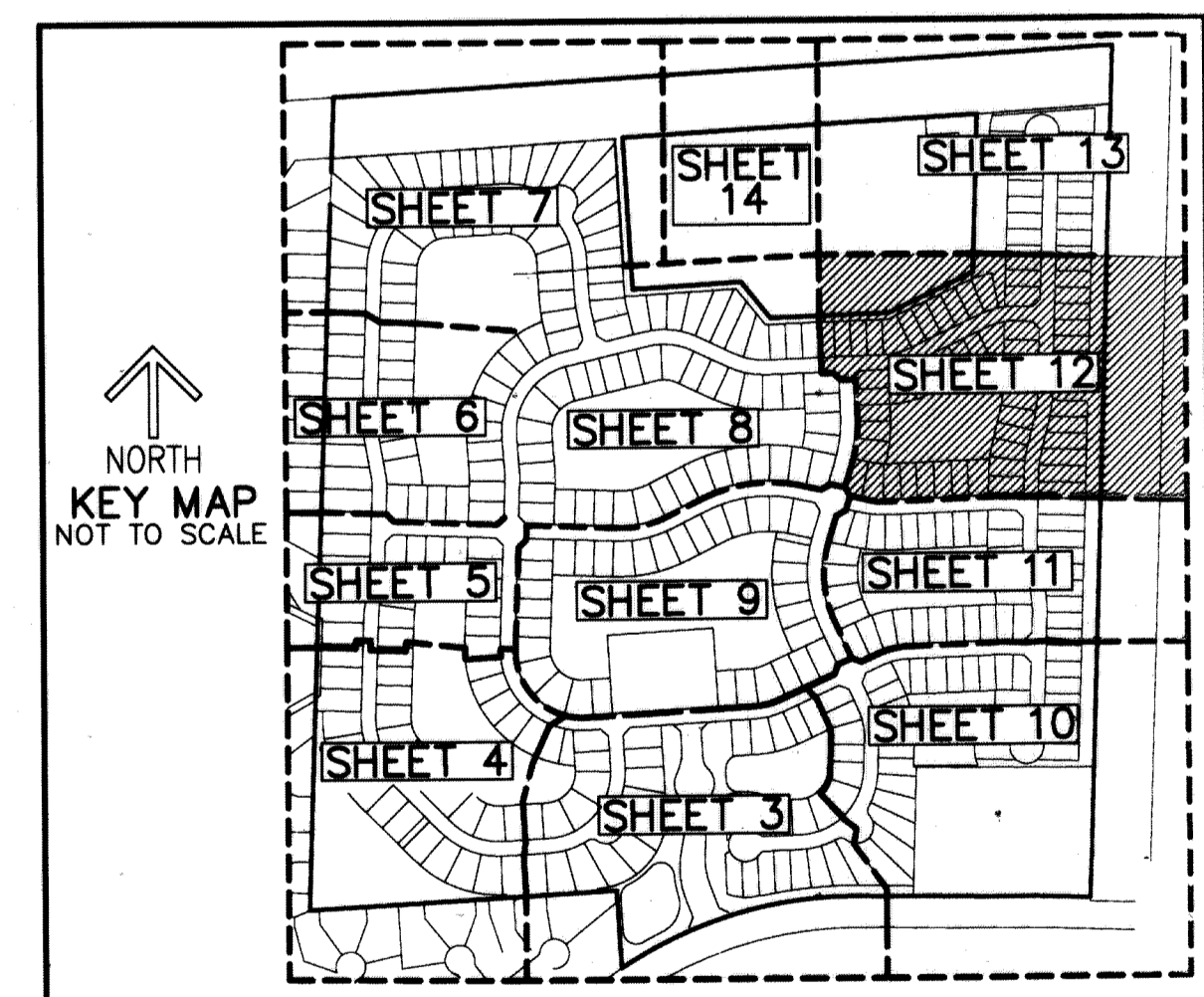
STATE OF FLORIDA
 COUNTY OF PALM BEACH
 THIS PLAT WAS FILED FOR
 RECORD AT _____ M.
 THIS _____ DAY OF _____
 A.D. 201____ AND DULY RECORDED
 IN PLAT BOOK _____ ON
 PAGES _____ AND _____
 SHARON R. BOCK
 CLERK AND COMPTROLLER

BY: _____
 DEPUTY CLERK

SHEET 12 OF 14



- LEGEND/ABBREVIATIONS**
- CL - CENTERLINE
 - Δ - DELTA (CENTRAL ANGLE)
 - BDE - BUFFER DRAINAGE EASEMENT
 - CB - CHORD BEARING
 - CD - CHORD DISTANCE
 - DE - DRAINAGE EASEMENT
 - FPL - FLORIDA POWER & LIGHT CO.
 - L - ARC LENGTH
 - LAE - LIMITED ACCESS EASEMENT
 - LB - LICENSED BUSINESS
 - LMAE - LAKE MAINTENANCE ACCESS EASEMENT
 - LME - LAKE MAINTENANCE EASEMENT
 - LSE - LIFT STATION EASEMENT
 - LBE - LANDSCAPE BUFFER EASEMENT
 - OHME - OVERHANG MAINTENANCE EASEMENT
 - O.R.B. - OFFICIAL RECORD BOOK
 - R - RADIUS
 - SF - SQUARE FEET
 - UE - UTILITY EASEMENT
 - PRM - DENOTES PERMANENT REFERENCE MONUMENT
 - 4" x 4" x 24" CONCRETE MONUMENT WITH ALUMINUM DISK STAMPED "C&W PRM LB3591"
 - PCP - DENOTES PERMANENT CONTROL POINT
 - OHME - OVERHANG/MAINTENANCE EASEMENT
 - INDICATES "ZERO" SIDE OF LOT LINE
 - PBCUE - PALM BEACH COUNTY UTILITY EASEMENT
 - (NR) - NON RADIAL LINE



MATCH LINE SHEET 11 OF 14

MATCH LINE SHEET 8 OF 14

MATCH LINE SHEET 13 OF 14

NOT A PART OF THIS PLAT
 TRACT A
 SECTION 15
 NORTHEAST QUARTER
 (PLAT BOOK 107, PAGES 173-174)

PLAT LIMIT

PALM BEACH CANAL
 (CANAL PLAT BOOK 20)

HAWTHORNE
 SUBDIVISION
 (PLAT BOOK 30, PAGE 104)

PLAT LIMIT

FOUND PRM
 PLS 2125